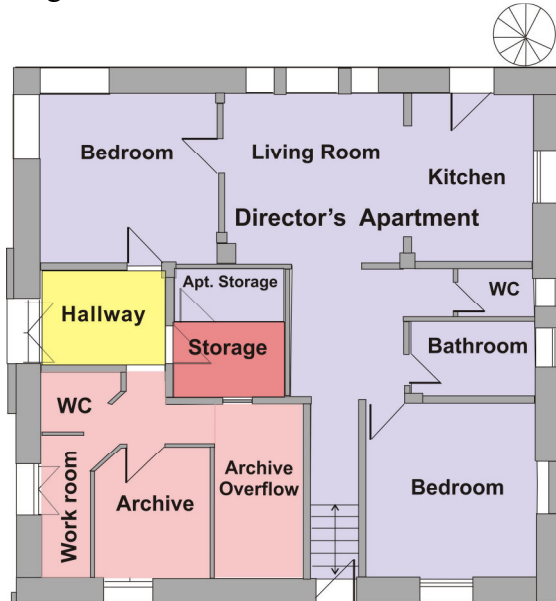


CIG's New House – Floor Plans

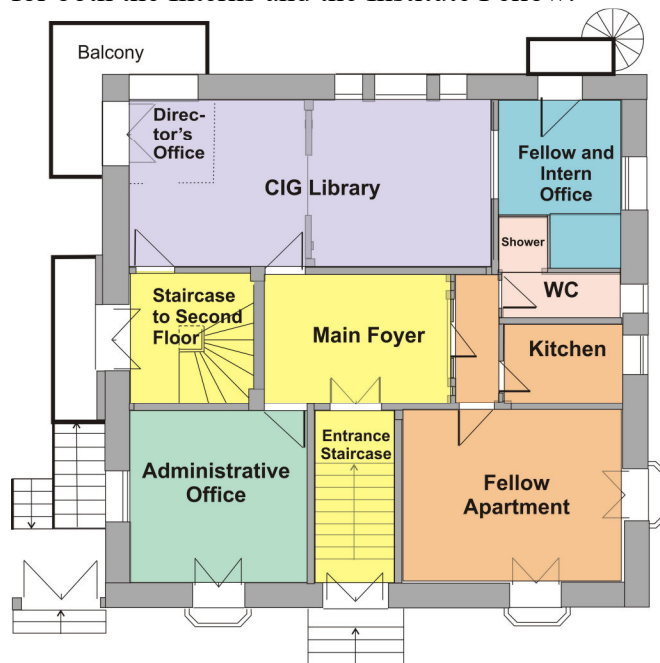
Ground Floor

The ground floor will house the Institute's growing archive of excavation records, photographs and historical documents. There will also be a modern two-bedroom apartment meant to provide long-term accommodations for the Institute's Director while in Athens.



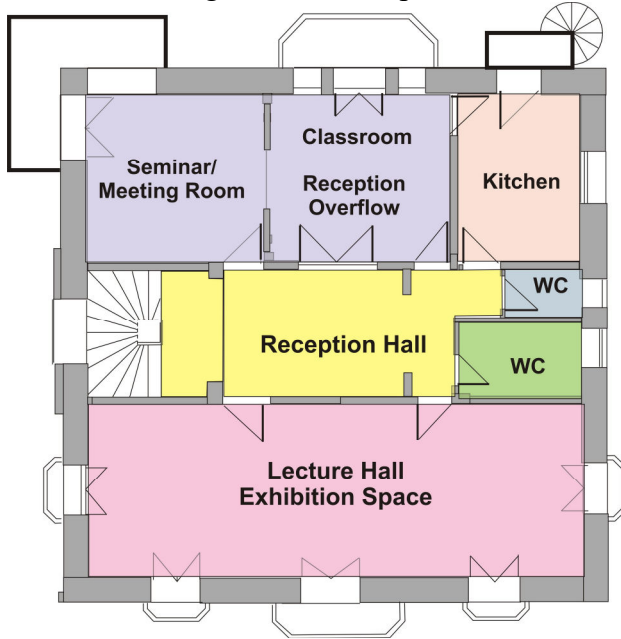
First Floor

The first floor will serve as the heart of the Institute with a large administrative office, the Library, a small apartment for the Institute's annual Fellow, and a work space within the Library for both the Interns and the Institute Fellow.



Second Floor

On the second floor, three large front rooms will be opened up to create a large Lecture Hall, to accommodate more than 80 people, twice the capacity of the Institute's current lecture space. Groups may wish to use the Institute's facilities for art exhibitions or conferences. Receptions after events will have their own catering facility/kitchen. A spacious classroom and seminar/meeting room will be provided at the back of this level.



Roof Terrace

The rooftop terrace, for the moment, holds great potential, especially for evening receptions in the spring and autumn. First, though, the main staircase has to be extended upward to reach it. Here, guests of the Institute will be able to enjoy warm breezes and starry skies, while holding cool beverages amid lively chats.

